



COMMERCIAL ST. VIEW OF WEST ELEVATION OF VAULTS CONTAINING CROSS ARCHES - Vaults to be opened up and rubble excavated to enable existing cross arches to be surveyed.



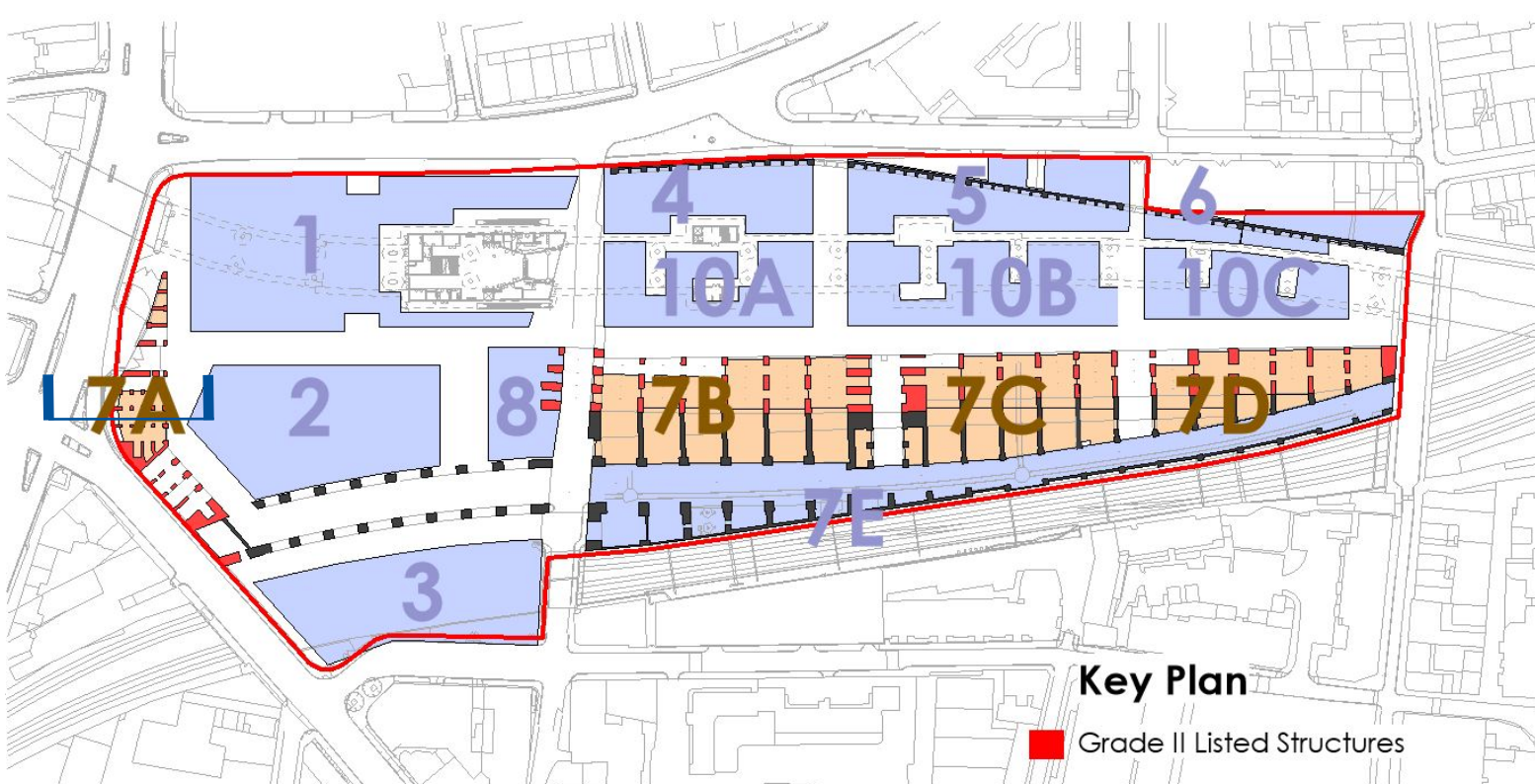
VIEW OF EAST ELEVATION OF VAULTS CONTAINING CROSS ARCHES - Vaults to be opened up and rubble excavated to enable existing cross arches to be surveyed.



VIEW INSIDE SURVEYED VAULT CONTAINING CROSS ARCHES



VIEW INSIDE SURVEYED VAULT CONTAINING CROSS ARCHES



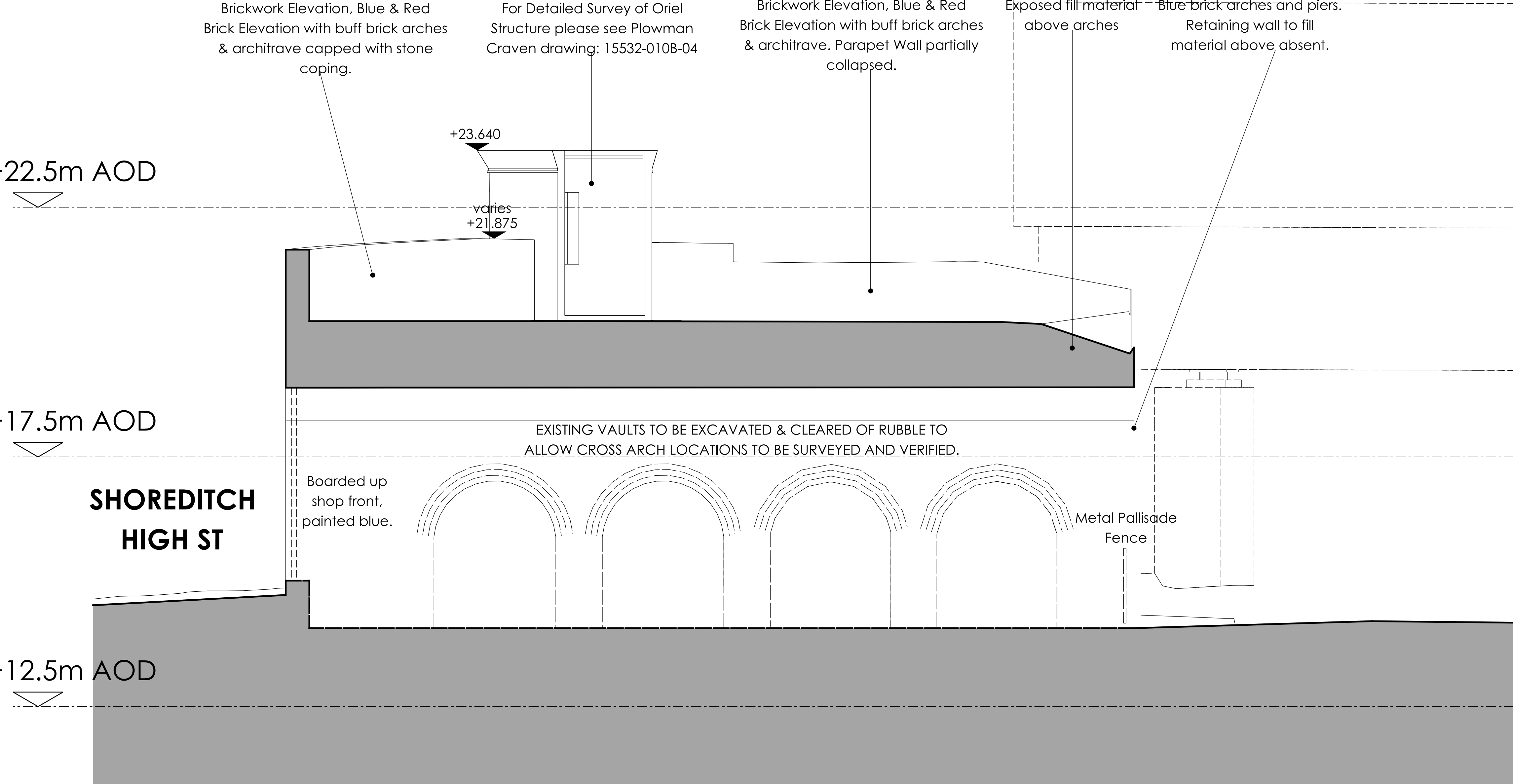
Key Plan
Grade II Listed Structures

+22.5m AOD

+17.5m AOD

+12.5m AOD

SHOREDITCH
HIGH ST



PLOT 7A - EXISTING SECTION

NOTES:
REFER TO PLOWMAN CRAVEN SURVEY DRAWINGS:
15532-010B-04 (A) - Oriel Drawings
15532-010E-01 - Listed Gateway Elevation
15532-010E-19 - Listed Gate
15532-010E-20 - Listed Gate Posts
15532-010T-01 (A) - 3D Street Survey
15532-010T-02 (B) - 3D Site Topo
15532-010T-03 (A) - Boundary Drawing
15532-010W-02 (A) - Railway Cutting
15532-013T-01 (B) - Planimetric Survey
W15532-010SM - 3D Arch Survey

FOR DETAIL OF ARCHES REFER TO:
KMH HERITAGE STATEMENT & ALAN BAXTER CONDITION SURVEY



Do not scale the drawing
Do not derive dimensions from digital media

Rev	Date	Revision Notes	Drawn by	Checked	Rev	Date	Revision Notes	Drawn by	Checked	Rev	Date	Revision Notes	Drawn by	Checked	Drawing status:	Job No:	Drawing No:	Rev:
—	—	—	—	—	—	—	—	—	—	—	—	—	—	—	PLANNING FOR APPROVAL	3465	BGY-FBA-00-XX-DR-A-00_10-7A01	P1
—	—	—	—	—	—	—	—	—	—	—	—	—	—	—	The Goodsyards	© Drawing & Design Copyright of:	FAULKNERBROWNS ARCHITECTS	FaulknerBrowns LLP Oakson House Northumbrian Way Killingworth Newcastle upon Tyne NE12 5DW T +44 (0) 191 2683007 F +44 (0) 191 2478132
—	—	—	—	—	—	—	—	—	—	—	—	—	—	—	Drawing title:	—	—	—
—	—	—	—	—	—	—	—	—	—	—	—	—	—	—	PLOT 7A - Existing Section SHEET 1	—	—	—
—	—	—	—	—	—	—	—	—	—	—	—	—	—	—	Date:	Scale:	Drawn By:	Checked By:
—	—	—	—	—	—	—	—	—	—	—	—	—	—	—	April 19	1:50@A1	JK	TL